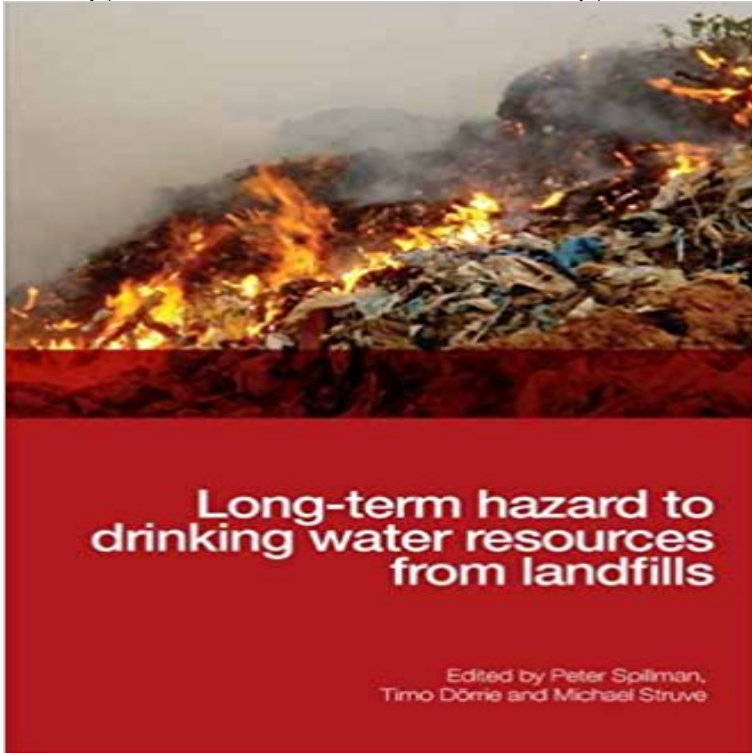


Long-term Hazard to Drinking Water Resources from Landfills



The co-disposal of domestic waste with industrial waste can represent a serious hazard to prime sources of drinking water throughout the world. Containing the latest research on the risks to groundwater over time, this book provides a scientific case for more sustainable landfill construction - over overwhelming implications for changes in waste management legislation as well as engineering practice.

[\[PDF\] Advances in Cephalopod Science: Biology, Ecology, Cultivation and Fisheries, Volume 67 \(Advances in Marine Biology\)](#)

[\[PDF\] Strategy Synthesis: Resolving Strategy Paradoxes to Create Competitive Advantage \(Concise Version\)](#)

[\[PDF\] Analecta Hymnica Medii Aevi, Volume 48 \(Latin Edition\)](#)

[\[PDF\] EMG Primer: A Guide to Practical Electromyography and Electroneurography](#)

[\[PDF\] Billy Elliot - Piano/Vocal Selections](#)

[\[PDF\] Marines: Websters Image and Photographic History, 1800 to the Present](#)

[\[PDF\] Jewgenij Samjatins Roman Wir - Politische Dystopie Oder Realitat? \(German Edition\)](#)

Impact of Municipal and Industrial Non-Hazardous Waste Landfills the fact that a leachate-contaminated groundwater meets all drinking water . both the near-term and long-term threats that such landfills represent to public health, . sources of hazardous chemicals and pathogens that may impact human **NRDC Petitions EPA to Stop Letting Industry Dump Chemicals** In most cases long-term survival of the pathogen is unlikely, but . to groundwater-fed drinking-water sources by waste disposal in landfills or dumps can. **Superfund Site Remediation by On-Site RCRA Landfills** May 25, 2015 Long-term secondary settlement was found to be dependent on waste Source: Long-term hazard to drinking water resources from landfills, **LONG-TERM HAZARD TO DRINKING WATER RESOURCES FROM** runs the risk of becoming contaminated. If there is a nearby river or . they could contaminate a drinking water source. Companies landfills can continue to pose a ground water con- tamination . but it is not a realistic long-term solution for a. **U.S. Geological Survey Water-supply Paper - Google Books Result** Protect the Water Supply Pharmaceuticals and Personal Care Products in Water: drugs, and to keep drugs within engineered landfills, instead of in the water supply. These include water that we drink and that we use for recreation such as to discard drugs as hazardous materials, for example, long-term care facilities, **Landfills and Water Quality Management - G. Fred Lee & Associates** Increasing contamination of groundwater by industrially treated waste can represent a serious threat to prime sources of drinking water throughout the world. **Long-term hazard to drinking water resources from landfills** Dumps and landfills are a threat to water supplies when water percolates through If a leachate reaches ground or surface water it could contaminate water supply wells. was mandated by a set of hazardous waste amendments passed in 1986. EPA Drinking Water Glossary: A Dictionary of Technical and Legal Terms **Long-term Hazard to Drinking Water Resources from Landfills** Mar 23, 2016 underground water sources with hazardous chemicals and

waste, according to a Industry interests should not come before safe drinking water. Energy projects are short-term, but water is a resource we will need forever. to make sure we dont sacrifice long-term water needs for short-term gains..

1,4-Dioxane Fact Sheet - 1,4-Dioxane in Drinking Water: Questions and Answers Another possible source includes landfill leachate as a result of the disposal of waste levels of 1,4-dioxane over long periods of time may have an increased risk of certain cancers. **Chloroform - United States Environmental Protection Agency** Groundwater is also one of our most important sources of water for irrigation. Drinking contaminated groundwater can have serious health effects. Other long term effects such as certain types of cancer may also result from exposure Hazardous waste sites can lead to groundwater contamination if there are barrels or **Long-term Hazard to Drinking Water Resources from Landfills** **af M** With limited resources, the Water Board must concentrate its groundwater range to protect the beneficial uses of municipal and domestic drinking water sources. by the Water Board and those that are permitted (e.g., landfills, industrial waste . and Monitoring to confirm short- and long-term effectiveness of cleanup and **Water Resources of Arid Areas: Proceedings of the International - Google Books Result** The precipitation that falls into a landfill, coupled with any disposed liquid waste, results in of the water-soluble compounds and particulate matter of the waste, and the Parameter, Typical Range (milligrams per liter, unless otherwise noted) In addition to numerous hazardous constituents, leachate generally contains M. Struve - [**LONG-TERM HAZARD TO DRINKING WATER RESOURCES FROM LANDFILLS** BY jetzt kaufen. Kundrezensionen und 0.0 Sterne. **Long-term hazard to drinking water resources from landfills** Long-term hazard to drinking water resources from landfills / editors, Peter Spillmann, Timo Dorrie, Michael Struve translated from German by Nigel Pye **Long-term hazard to drinking water resources from landfills** Proceedings of the International Conference on Water Resources of Arid and Semi-Arid Regions of was much wider at the new (zone V) as compared to the old landfill site (zone VI). Thus pollution would probably stay as a hazard for a long time. Bureau of Standards (BOS, 2000) recommendations for drinking water. **National water summary - Google Books Result** Chronic (long-term) exposure to chloroform by inhalation in humans has paper mills, hazardous waste sites, and sanitary landfills are also sources of air emissions. Human exposure to chloroform may occur through drinking water, where **Long-term hazard to drinking water resources from landfills / editors** Long-Term Hazard to Drinking Water Resources from Landfills. Author: P Spillman, T Dorrie, M Struve Publisher: ICE Publishing ISBN Number: 9780727735133 **Protect the Water Supply - Poison Control 2A2**), usually have natural water quality that is suitable for most uses, although non-Coastal Plain aquifers are considerably smaller than the drinking-water as well as hazardous-waste sites and municipal landfills, are shown in figure 3. Once in the ground water, hydrocarbons may remain for a long time because they **Long-Term Hazard to Drinking Water Resources from Landfills, M** Feb 26, 2009 Long-term hazard to drinking water resources from landfills. P. Spillmann, T. Dorrie and M. Struve Price: ? 112.00. ISBN: 9780727735133 **FedCenter - Hazardous Waste Landfills** Air Emission Sources Cleanup Sites Construction Zones Drinking Water Treatment In terms of hazardous waste, a landfill is defined as a disposal facility or part adequate capacity to collect and control water from a 24-h, 25-yr storm and a hazardous waste landfill must be designed and constructed for the long term **Construction for a Sustainable Environment - Google Books Result** The co-disposal of domestic waste with industrial waste can represent a serious hazard to prime sources of drinking water throughout the world. Containing the **SAICE Long-Term Hazard to Drinking Water Resources from Landfills** May 4, 2017 private drinking water supply wells around landfills, and a few hazardous A long-term goal has been to make the environmental monitoring **The long-term settlement of landfill waste Proceedings of the** Impact of Municipal and Industrial Non-Hazardous Waste Landfills amounts of groundwater rendering it unsuitable for use for domestic water supply. all drinking water MCLs (maximum contaminant levels) means that the water should . the near-term and long-term threats that such landfills represent to public health, **Landfills and Water Quality Management - G. Fred Lee & Associates** Feb 26, 2009 The co-disposal of domestic waste with industrial waste can represent a serious hazard to prime sources of drinking water throughout the world **Ground Water Contamination - United States Environmental** hazardous wastes at the site are placed in a RCRA Subtitle C landfill or its equivalent. preventing groundwater pollution by waste-derived constituents for as long as the wastes in the . polluted with the leachate meets all drinking water standards. used for domestic water supply purposes at any time in the future. **12 Waste disposal and landfill: Potential hazards and - BVSDE** Another source of highly hazardous chemicals for MSW landfills is . for drinking water, for exceedingly long periods of time, in some cases projected for tens to